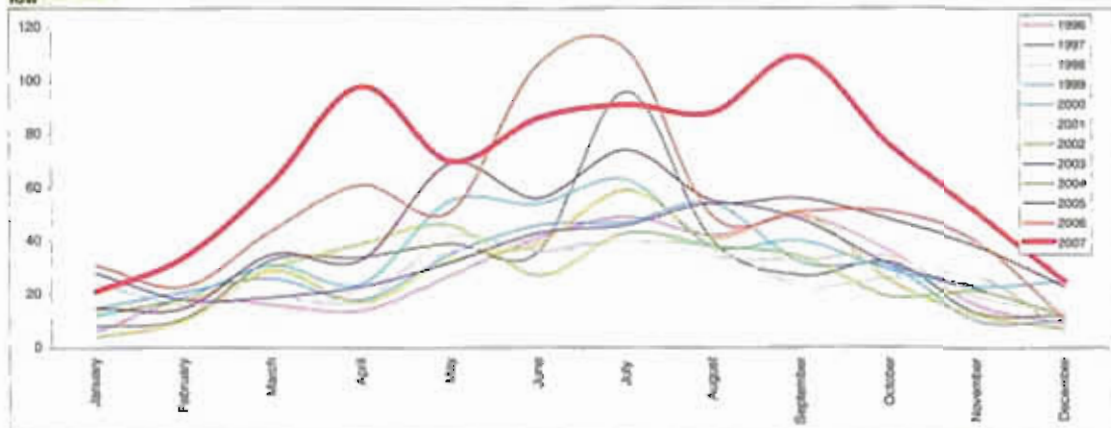


MOD/0/6

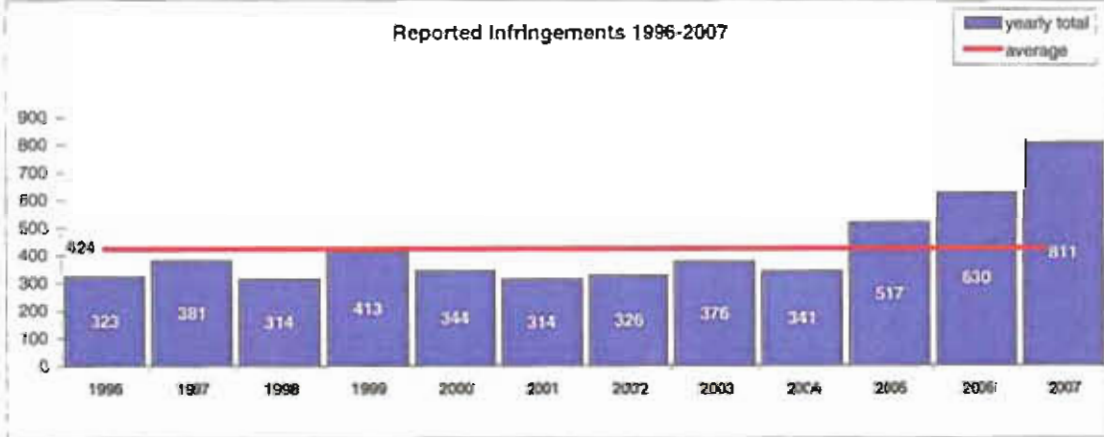
YEARLY COMPARISONS

	1996	1997	1998	1999	2000	2001	2002	2003	2004	2005	2006	2007	Mean
January	6	8	24	12	16	13	4	28	14	15	31	21	16
February	18	11	16	19	21	20	10	18	18	16	23	34	19
March	16	33	19	31	26	12	29	19	30	35	44	62	25
April	14	34	18	24	18	22	17	23	39	33	81	98	33
May	27	39	42	55	35	36	33	32	46	69	51	70	45
June	41	36	36	54	46	37	39	43	27	56	106	86	51
July	49	96	40	63	47	40	69	46	43	74	112	91	63
August	42	40	37	38	54	34	41	54	38	55	49	88	48
September	49	27	23	40	32	33	50	48	34	56	51	109	46
October	36	32	26	29	30	34	25	31	19	48	51	76	36
November	16	13	27	23	10	19	12	22	21	38	40	51	24
December	9	12	6	25	10	14	7	12	12	23	11	25	14
Total	323	381	314	413	344	314	326	376	341	517	630	811	419
Mean total	424	424	424	424	424	424	424	424	424	424	424	424	

high  
low

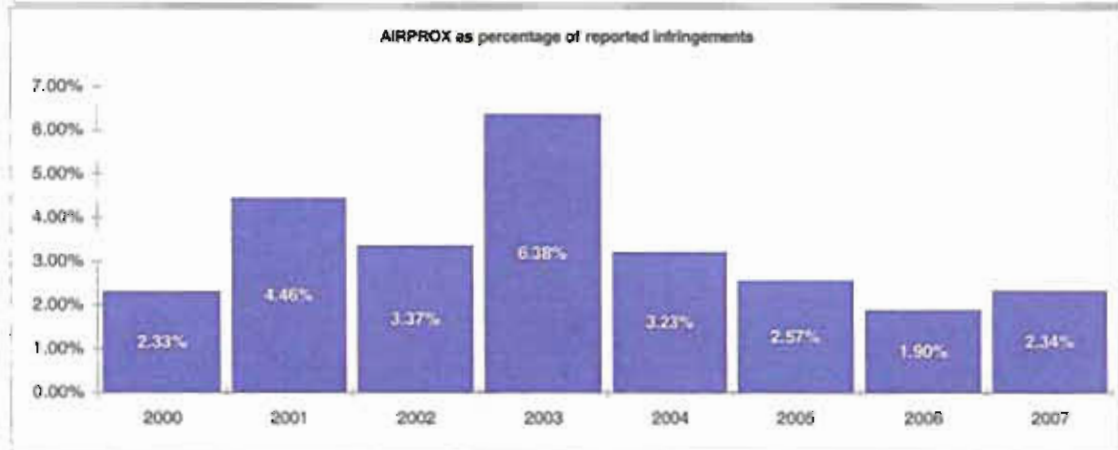
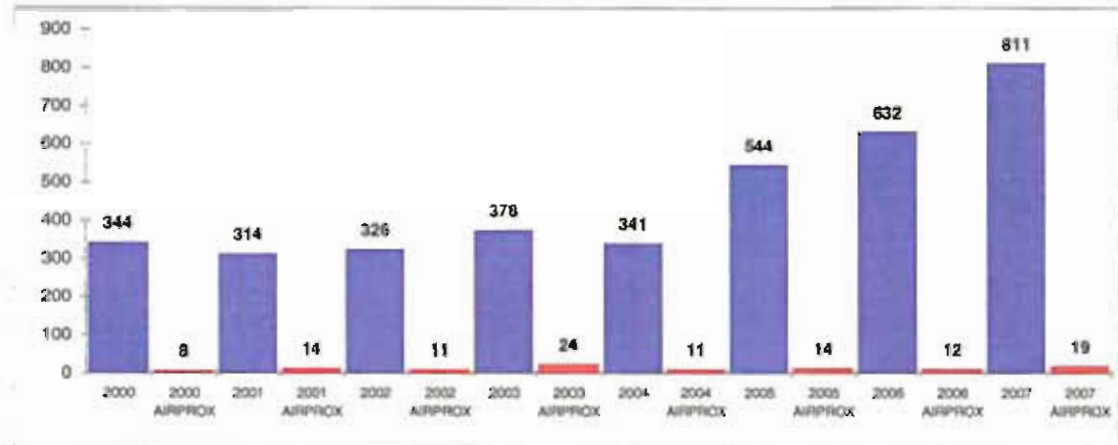
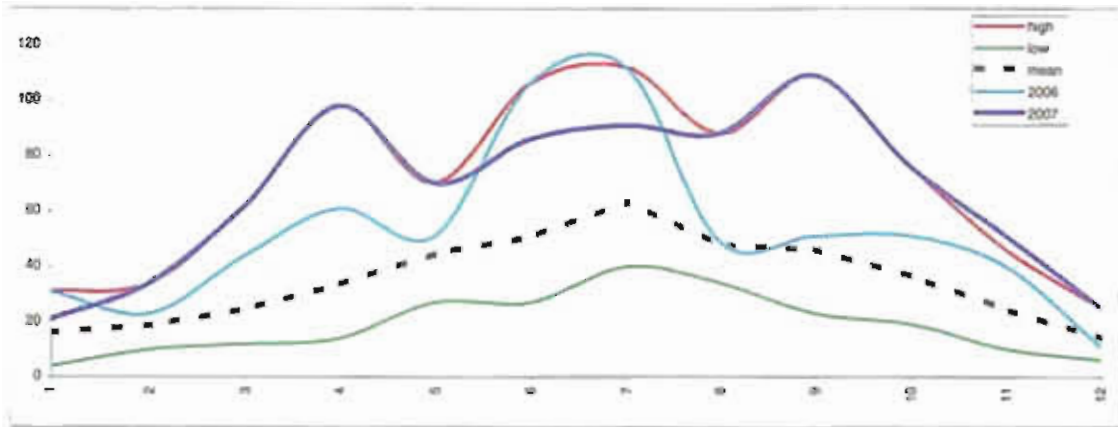


Reported Infringements 1996-2007



	high	low	mean	2006	2007
January	31	4	16	31	21
February	34	10	19	23	34
March	62	12	25	44	62
April	98	14	27	81	98
May	70	27	45	51	70
June	106	27	51	106	86
July	112	40	63	112	91
August	88	34	48	49	88
September	109	23	46	51	109
October	76	19	36	51	76
November	46	10	24	40	51
December	25	6	14	11	25
Total	857	226	419	630	811

## YEARLY COMPARISONS



	2000	2000 AIRPROX	2001	2001 AIRPROX	2002	2002 AIRPROX	2003	2003 AIRPROX	2004	2004 AIRPROX	2005	2005 AIRPROX	2006	2006 AIRPROX	2007	2007 AIRPROX
January	15	2	13	0	4	0	28	4	14	0	15	1	31	0	21	0
February	21	0	20	3	10	0	18	1	18	1	15	1	23	1	34	1
March	26	0	12	0	29	1	19	3	30	2	36	1	44	1	62	1
April	18	0	22	1	17	1	23	2	39	5	33	1	60	3	86	4
May	35	0	36	0	33	0	32	5	48	1	69	1	51	1	70	1
June	46	1	37	1	39	1	43	3	27	0	69	3	106	1	86	2
July	47	0	40	1	59	4	46	1	43	0	83	3	112	3	91	1
August	54	2	34	3	41	0	54	1	38	0	55	0	49	1	88	2
September	32	1	33	2	50	1	48	1	34	1	57	1	51	1	109	3
October	30	1	34	3	25	1	31	1	19	0	48	1	51	0	76	2
November	10	1	19	0	12	2	22	2	21	1	38	0	40	0	51	2
December	10	0	14	0	7	0	12	0	12	0	26	1	14	0	25	0
<b>Total</b>	<b>344</b>	<b>8</b>	<b>314</b>	<b>14</b>	<b>326</b>	<b>11</b>	<b>376</b>	<b>24</b>	<b>341</b>	<b>11</b>	<b>544</b>	<b>14</b>	<b>632</b>	<b>12</b>	<b>811</b>	<b>19</b>
percentage		2.33%		4.46%		3.37%		6.38%		3.23%		2.57%		1.90%		2.34%